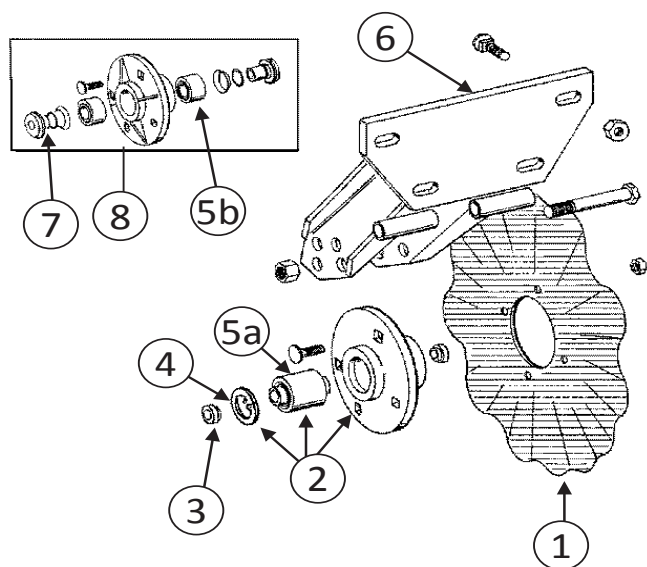


Kinze Unit Mounted Counter

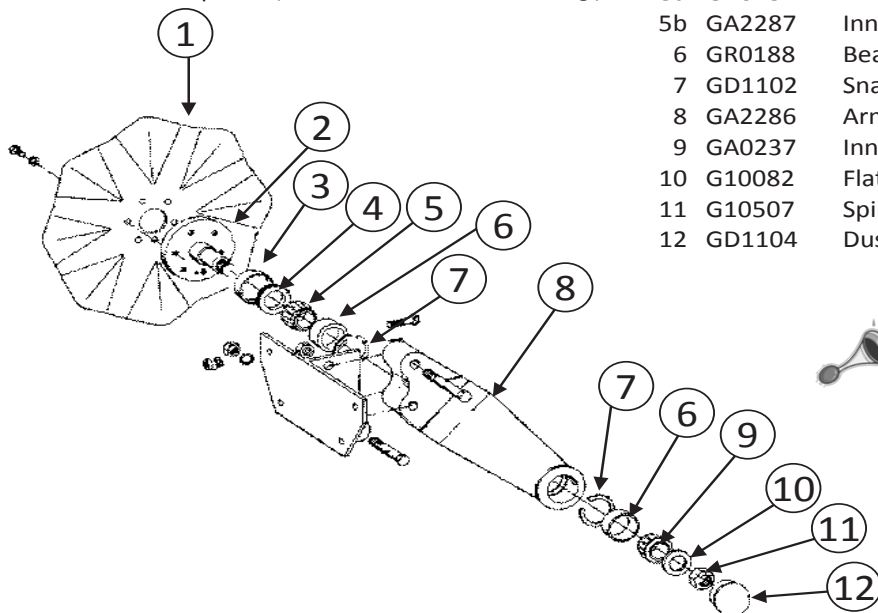


- | | | |
|----|---------|---|
| 1 | GD9254 | 3/4" 13 Wave Blade |
| | GD7803 | 1" 8 Wave Blade |
| | GD7804 | 1" Bubble Blade |
| 2 | GA8641 | Hub With Bearing & Snap-Ring |
| 3 | GD11677 | Adapter |
| 4 | GD11652 | Snap Ring |
| 5a | GA8603 | Sealed Bearing |
| 5b | GA5622 | Greaseable Bearing (<u>2 Required</u>) |
| 6 | GA11520 | Frame |
| 7 | G1K330 | Adapter Kit (<u>2 Required</u>) |
| 8 | G1K289 | Hub Update Kit (<u>Updates To Sealed Brg</u>) |

Kinze & John Deere Unit Mounted Counter

- | | | |
|----|----------|--|
| 1 | B45-1123 | 3/4" 13 Wave Blade (<u>6 Bolt</u>) |
| | B16157K | 1" Bubble Blade (<u>6 Bolt</u>) |
| 2a | GR0686 | Spindle (Grease seal separate from inner Brg.) |
| 2b | GR0978 | Spindle (Grease seal attached to inner Brg.) |

- | | | |
|----|--------|---|
| 3a | GD1100 | Seal Wear Ring (Grease seal separate from inner Brg.) |
| 3b | GD4433 | Seal Wear Ring (Grease seal attached to inner Brg.) |
| 4 | GA2073 | Grease Seal |
| 5a | GA0237 | Inner Bearing (Grease seal separate from inner Brg.) |
| 5b | GA2287 | Inner Bearing (Has attached seal & includes Brg. Cup) |
| 6 | GR0188 | Bearing Cup |
| 7 | GD1102 | Snap Ring |
| 8 | GA2286 | Arm |
| 9 | GA0237 | Inner Bearing Cone |
| 10 | G10082 | Flat Washer |
| 11 | G10507 | Spindle nut |
| 12 | GD1104 | Dust Cap |



Attention!!

There are two different versions of this style coulters!!

To ensure that you order the correct components, you will need to determine if the grease seal is attached to the inner bearing or if it is separate from the inner bearing.

If you need assistance, please call our Parts Department at 1-800-414-4705.