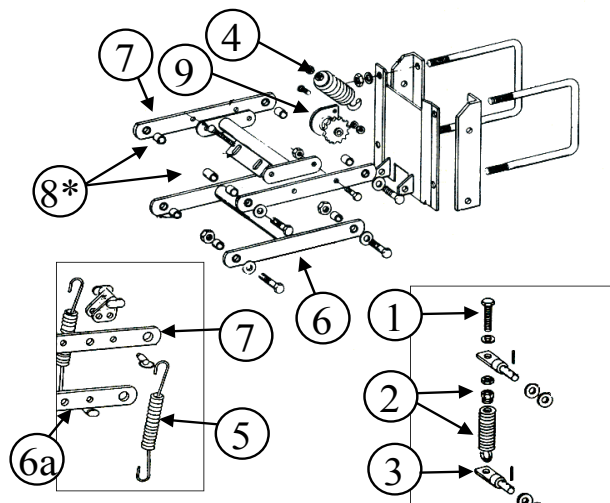


KINZE and John Deere Planters

Parallel Arms and Mounting Brackets



Heavy Duty Down Pressure Springs

Standard Down Pressure Springs

Service Notes

- Row units should have no more than 1" Vertical free play
- Replace hardened washers when replacing parallel arm bushings
- Use fine threaded bolts and lock nuts

Standard Down Pressure Springs

- | | | |
|---|--------|---------------------------|
| 1 | G10024 | 7/16" x 4" All Tread Bolt |
| 2 | GA2052 | Spring |
| 3 | GA2036 | Eyebolt |

Heavy Duty Down Pressure Springs

- | | | |
|---|--------|------------------|
| 4 | GA2068 | Spring with Plug |
| 5 | GD8249 | Spring New Style |

Heavy Duty Down Pressure Springs

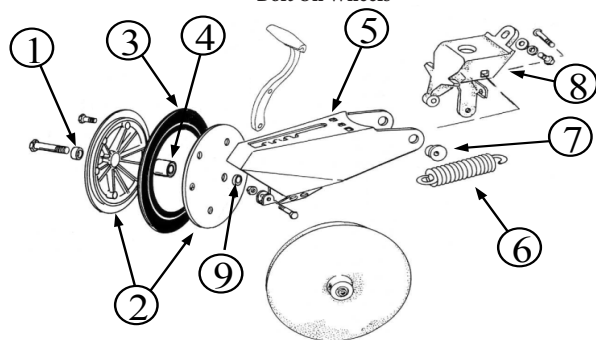
- | | | |
|----|---------|------------------------|
| 6 | GA5550 | Lower Arm (Old Style) |
| 6a | GA5651 | Lower Arm (New Style) |
| 7 | GD11422 | Parallel Arm (Upper) |
| 8 | GB0218 | Bushing *See Kit Below |
| 9 | GA2057 | Drive (9/16" Hex Bore) |
| 10 | GA1720 | Drive (7/8" Hex Bore) |

G1K394 Parallel Arm HDWE Kit

*Includes all the bushings, bolts, washers, and nuts to rebuild the parallel arms on 2 row units.

New Style "V" Closing Wheel

Bolt On Wheels



- | | | |
|---|--------|------------------------|
| 1 | GB0218 | Bushing |
| 2 | GD9120 | Nylon Half Wheel |
| 3 | GD1085 | Rubber Tire |
| 4 | GA6171 | Bearing |
| 5 | G1K293 | Arm Kit Incl. Hardware |
| 6 | GD8460 | Spring |
| 7 | GB0219 | Eccentric Bushing |
| 8 | GB0268 | Wheel Arm Stop |
| 9 | GD1109 | 1/4" Bushing |

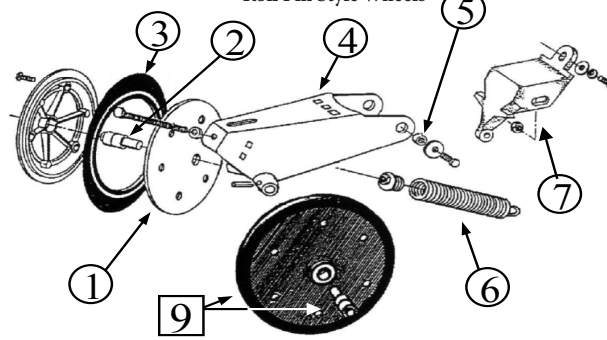
GA6434 Complete Rubber Closing Wheel

G1K294 Close Wheel Arm Kit

*Update Kit includes Nylon Closing Wheels, Quick Adjust Bracket, Handle, Spring, New Style Bushings & Hardware

Old Style "V" Closing Wheel

Roll Pin Style Wheels



- | | | |
|---|--------|---|
| 1 | GR1180 | Nylon Wheel Kit |
| 2 | GA2022 | Bearing |
| 3 | GD1085 | Tire, 1" x 15" |
| 4 | GA6056 | Arm w/ Spindles |
| 5 | GB0219 | Bushing |
| 6 | GA2054 | Spring w/ Plug |
| 7 | GB0113 | Wheel Arm Stop |
| 8 | G10603 | Roll Pin |
| 9 | GA3086 | Complete Old Style Closing Wheel (Roll Pin Style) |

Update to the new style bolt on wheels and the quick adjust bracket with kit **G1K294**